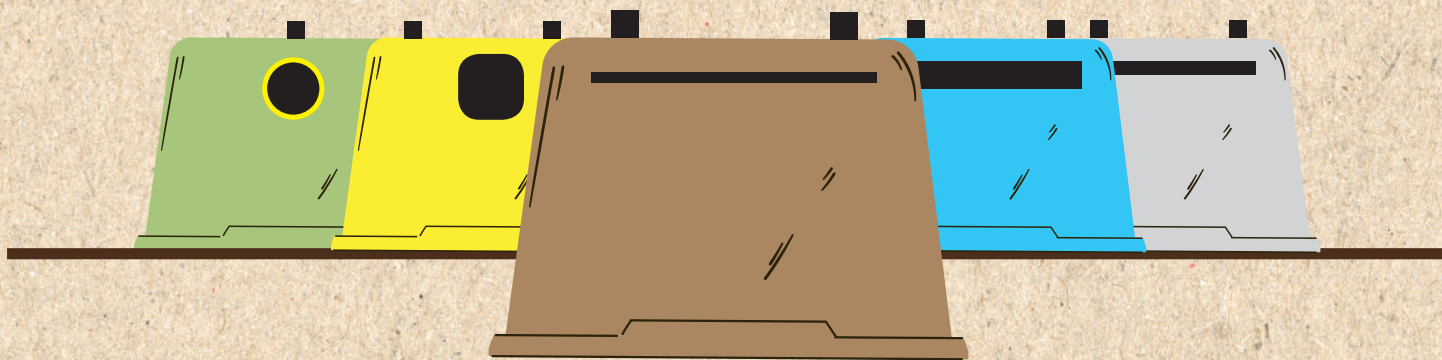


COMERCIAL WASTE

sorting guide



Financiado por
la Unión Europea
NextGenerationEU



Plan de
Recuperación,
Transformación
y Resiliencia



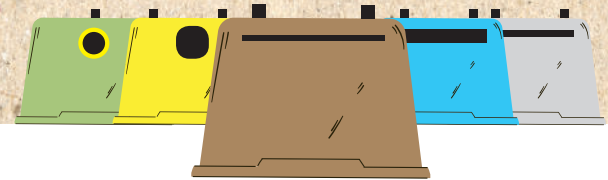
Ilustre Ayuntamiento de
Granadilla de Abona



“ The importance of correct waste sorting ”



Ilustre Ayuntamiento
Granadilla de Abona



Waste generation and its subsequent management is becoming one of the most obvious manifestations of the unsustainability of our economic growth model. While, up to a few decades ago, the household waste generated was almost exclusively composed of organic matter, the garbage bag now contains a wide range of materials, many of which are non-biodegradable and, in the worst case, are destined for landfill or incineration. At the same time, the daily volume of waste generated per capita has increased considerably.

Waste generation has therefore become an environmental conflict given that a large quantity of materials

and resources that were costly to extract and process are being wasted when they could be re-used in order to make economic and environmental savings.

Therefore, this guide on how to correctly sort waste is intended to be a practical tool for workers in the businesses located in Granadilla de Abona, allowing them to correctly sort all their commercial waste and to make full use of this waste through recycling. In this way everyone can work together to make Granadilla de Abona a cleaner and more sustainable municipality.

ORGANIC

Food waste

This is the biodegradable organic waste derived from plants and/or animals, capable of being biologically decomposed, and generated in the household and commercial sectors.



Food and vegetable scraps



Meat and fish scraps



Seafood, egg and nut shells



Corks, toothpicks and matches



Cooked food scraps



Coffee grounds and used tea bags

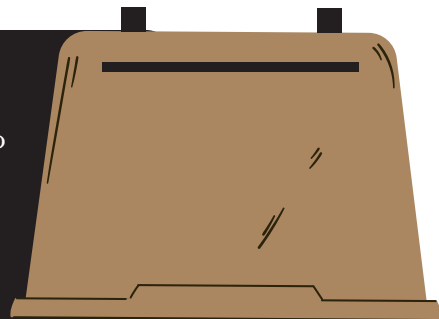


Soiled paper towels and napkins



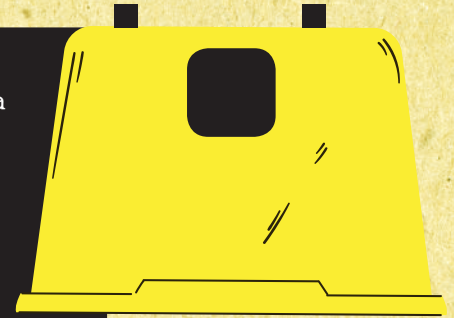
Dead plants and cut flowers

The organic matter derived from household and commercial organic wastes accounts for an average of up to 41% of the total weight of the different waste fractions. In Granadilla de Abona this fraction is collected separately through the brown container.



LIGHT PACKAGING

The yellow container is intended for plastic packaging, metal packaging, Tetra Pak cartons, film wraps, blister packs, etc. It is a common mistake to think that any type of waste with a plastic content can be put into this container. Therefore, pens, toys, coat hangers and other items must either be put into the rubbish container or taken to a Punto Limpio (recycling centre).



Plastic



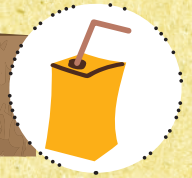
- Bags
- Bottles and containers
- Disposable cups and plates
- Lids and caps
- Transparent film
- Fruit and vegetable mesh bags
- Blister packs

Metal



- Cans
- Aluminium plates and trays
- Tops and lids
- Empty aerosol cans
- Aluminium foil

Other items



- Tetra pack cartons
- Trays and packaging made from expanded polystyrene (eps)

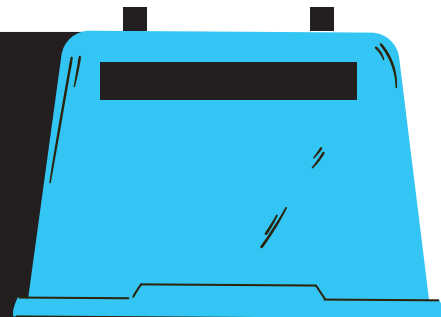


PAPER AND CARDBOARD

Sheets of paper
Envelopes and notebooks
Magazines and old newspapers
Egg boxes
Cardboard boxes and packaging
Cardboard tubes
Packaging
Labels
Junk mail

It is important to flatten the cardboard before putting it into the container.

In 2021, some 1,080 tons of paper and cardboard were collected in Granadilla de Abona. One ton of recycled paper avoids felling 17 trees.



Remember that you can use the
DOOR-TO-DOOR COMMERCIAL CARDBOARD COLLECTION SERVICE.

🗑️ This service is intended for companies, or similar, located in the municipality of Granadilla de Abona. This collection service is made at the doorstep of the business establishment on specific days. The aim is to make it easier for business owners to manage their paper and cardboard and to prevent the overflow of curbside containers.

In order to obtain this service, which is completely free of charge, it is necessary to sign a membership agreement and complete a form with the general details of the business, which can be downloaded on www.sermugran.es.



GLASS

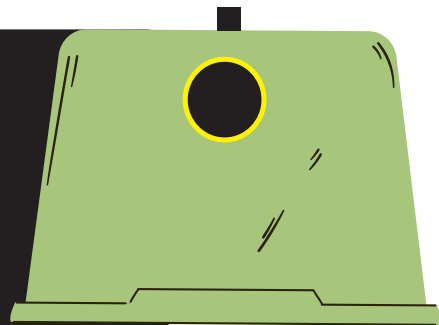


Glass packaging

Glass bottles
Preserve and jam jars
Cosmetic and perfume bottles

Panes of flat glass from windows or picture frames, drinking glasses and cups, ceramic glass hobs and mirrors must be taken to the Punto Limpio (recycling centre). Do not dispose of the stoppers or lids in this container (metal, plastic or cork).

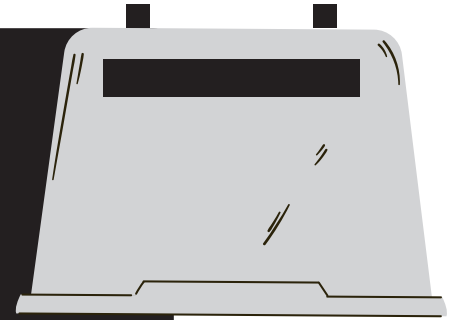
In 2019, Granadilla de Abona collected 763 tons of glass packaging. Glass is 100% infinitely recyclable without losing its properties. However, it is important to differentiate between glass and crystal. Glassware such as bottles and jars are made from glass while crystal is used to make drinking glasses and tableware. Crystal contains minerals that cannot be melted down in the same furnaces used for glassware. The green container is only for the disposal of glass.



RUBBISH



The rubbish fraction comprises everything that is not included in the other sections of this guide, in other words, it is impossible to recycle. Although it may appear otherwise, this fraction only comprises a mere 20% of all waste. Bags should be put in the rubbish container from 20:00 to 24:00 hours to avoid causing a nuisance from bad smells.



- Sanitary textile waste
- Plastics that are not containers or packaging
- Cigarette ends
- Cat litter or similar
- Animal excrement
- Ceramic and porcelain items
- Household cleaning waste
- Drinking glasses, cups and other crystal items
- Coat hangers
- Plastic boxes for fruit or similar
- Shrink wrap plastics
- Commercial expanded polystyrene (EPS)



PUNTO LIMPIO

RECYCLING CENTRE

A Punto Limpio or recycling centre is a place that can receive certain types of urban waste, making it possible to:

- ✔ Make good use of those materials that can be recycled, thereby saving raw materials and energy.
- ✔ Avoid the uncontrolled disposal of large or special waste items that cannot be disposed of using the normal waste collection services.
- ✔ Sort and recycle hazardous household waste.

PUNTO LIMPIO AT ARONA 900 30 50 00

TUESDAYS TO FRIDAYS: 8:00 - 20:00

SATURDAYS: 9:00 - 20:00

SUNDAYS: 9:00 - 14:00

CLOSED ON MONDAY AND HOLYDAYS

www.tenerife.es/portalcabte/es/temas/residuos

www.sermugran.es - 922 75 81 16



The waste items indicated in the following table can be disposed of at the Punto Limpio:

Ordinary items



Paper and cardboard
Light packaging, plastics, metals
Textiles
Used vegetable oil

Especial items



Fluorescent lamps and light bulbs
Batteries and cells
Mineral oil
Paint and solvents
Photographic material
Ink cartridges and toner
Tyres
CDs and DVDs
Chemically contaminated containers
Car Batteries
Aerosols

Bulky items



Household appliances
Furniture
Mattresses
Chargers
Computers
Printers
Small household appliances

Other items



Wood and metal
DIY waste such as rubble
Garden clippings
Coffee pods

The Puntos Limpios are suitable places for taking small quantities of waste items that cannot be disposed of in the normal curbside containers. These waste items are subsequently collected by authorised waste managers in order to provide the correct treatment

USED CLOTHING AND FOOTWEAR



Clothing
Footwear
Handbags
Ties
Household linen
Blankets
Sheets
Towels

Clothing and footwear placed in tightly closed bags can be put into these containers, to ensure that these items can be subsequently recycled to make new textiles and the re-use of the same.
Granadilla de Abona currently has 30 containers for the collection of used clothing and footwear, find your nearest location at:
www.sermugran.es

HOUSEHOLD ITEMS

This collection service is directed at those household items that cannot be disposed of in the network of containers due to their size or type.

Items of furniture

Armchairs

Sofas

Chairs

Mattresses and bed bases

Washing machines and

Refrigerators

Televisions

Video players



Calendar:

Place your household items in an orderly fashion next to a container bank, without obstructing the passage of vehicles or pedestrians, on the days indicated from **19:00** hours onwards.

To improve the service, call **010** to arrange for your collection. There is no service on public holidays.

SUNDAY	MONDAY	TUESDAY	WEDNESDAY
ATOGO-CASABLANCA LOS ABRIGOS LA TEJITA-SOTAVENTO EL MÉDANO	SAN ISIDRO	LAS VEGAS-CHIMICHE LOS BLANQUITOS EL DESIERTO EL SALTO VICÁCARO	CRUZ DE TEA GRANADILLA CHARCO DEL PINO



WASTE COOKING OIL

Cooking oil
Frying oil
Reserve cans oil

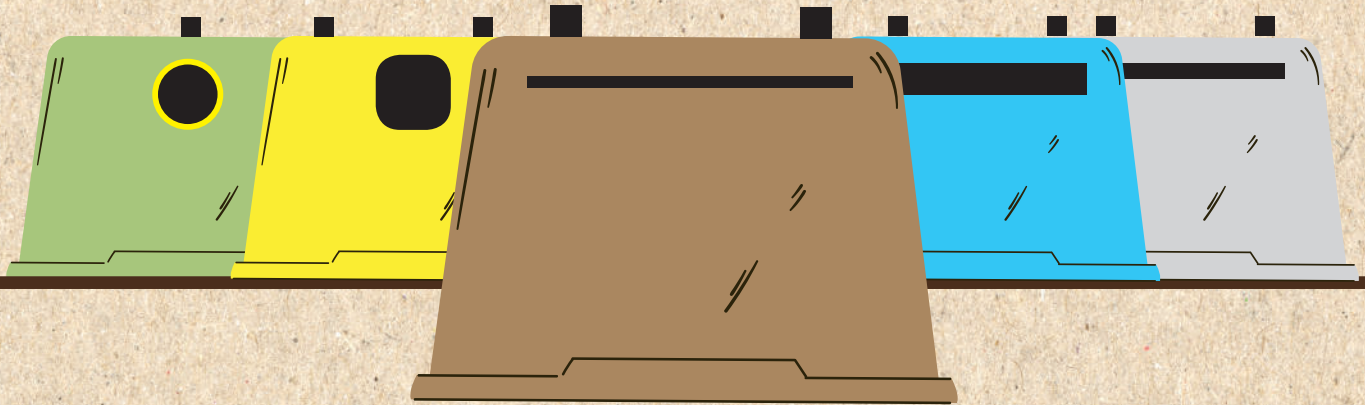


The waste oil container, which is generally orange, is intended for the disposal of waste cooking oil. It is forbidden to put industrial oils such as engine oils, lubricants, etc. into this container.

Recycled vegetable oil can be used to make biodiesel, as well as soaps, detergents, candles, among others. The oil must be put in a well-sealed plastic container.



SUSTAINABLE GRANADILLA



Financiado por
la Unión Europea
NextGenerationEU



Plan de
Recuperación,
Transformación
y Resiliencia



Ilustre Ayuntamiento de
Granadilla de Abona

