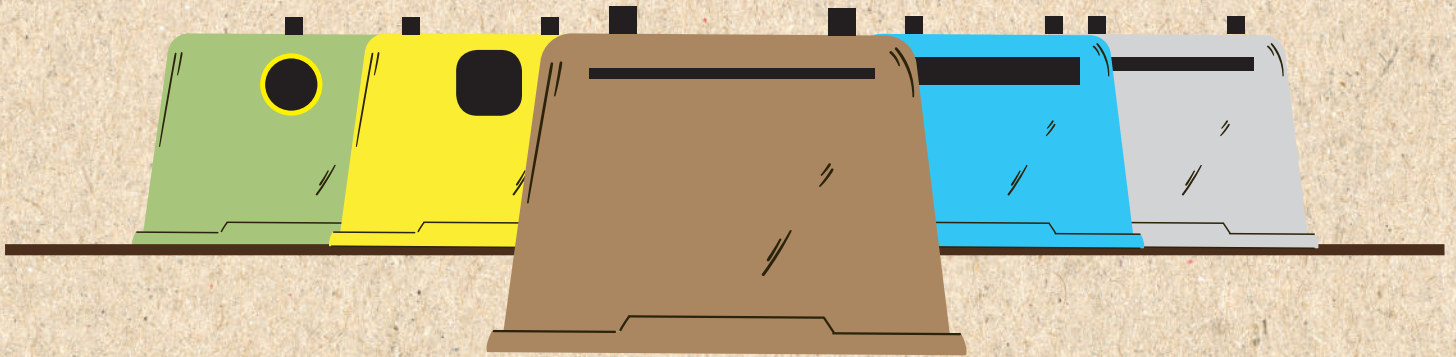


Guide

# ON HOW TO CORRECTLY SORT HOUSEHOLD WASTE



Financiado por  
la Unión Europea  
NextGenerationEU



Plan de  
Recuperación,  
Transformación  
y Resiliencia



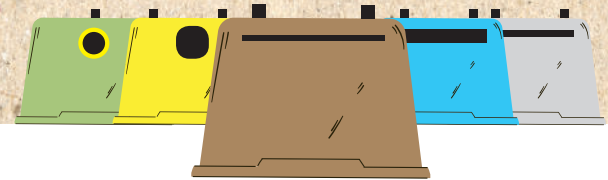
Ilustre Ayuntamiento de  
Granadilla de Abona



# “ The importance of correct waste sorting ”



Ilustre Ayuntamiento  
Granadilla de Abona



**Waste generation and its subsequent management is becoming one of the most obvious manifestations of the unsustainability of our economic growth model.** While, up to a few decades ago, the household waste generated was almost exclusively composed of organic matter, the garbage bag now contains a wide range of materials, many of which are non-biodegradable and, in the worst case, are destined for landfill or incineration. At the same time, the daily volume of waste generated per capita has increased considerably.

Waste generation has therefore become an environmental conflict given that a large quantity of materials

and resources that were costly to extract and process are being wasted when they could be re-used in order to make economic and environmental savings.

Therefore, this guide on how to correctly sort waste is intended to be a practical tool for the citizens of Granadilla de Abona, allowing them to correctly sort all their household waste and to make full use of this waste through recycling. In this way everyone can work together to make Granadilla de Abona a cleaner and more sustainable municipality.



# ORGANIC

## Food waste

This is the biodegradable organic waste derived from plants and/or animals, capable of being biologically decomposed, and generated in the household and commercial sectors.



Food and vegetable scraps



Meat and fish scraps



Seafood, egg and nut shells



Corks, toothpicks and matches



Cooked food scraps



Coffee grounds and used tea bags

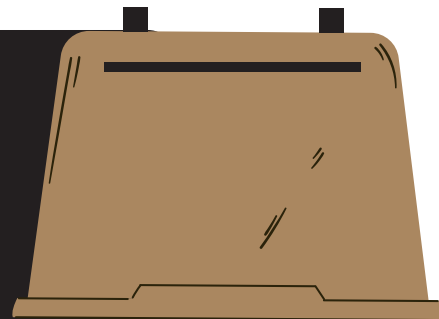


Soiled paper towels and napkins



Dead plants and cut flowers

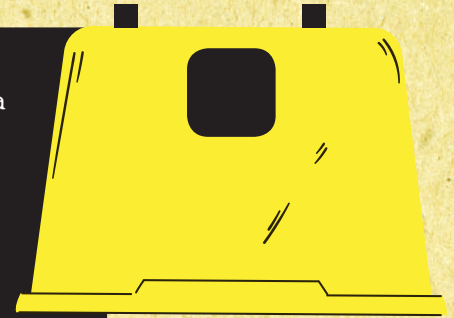
The organic matter derived from household and commercial organic wastes accounts for an average of up to 41% of the total weight of the different waste fractions. In Granadilla de Abona this fraction is collected separately through the brown container.





# LIGHT PACKAGING

The yellow container is intended for plastic packaging, metal packaging, Tetra Pak cartons, film wraps, blister packs, etc. It is a common mistake to think that any type of waste with a plastic content can be put into this container. Therefore, pens, toys, coat hangers and other items must either be put into the rubbish container or taken to a Punto Limpio (recycling centre).



## Plastic



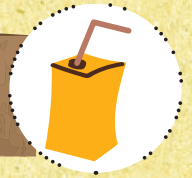
- Bags
- Bottles and containers
- Disposable cups and plates
- Lids and caps
- Transparent film
- Fruit and vegetable mesh bags
- Blister packs

## Metal



- Cans
- Aluminium plates and trays
- Tops and lids
- Empty aerosol cans
- Aluminium foil

## Other items



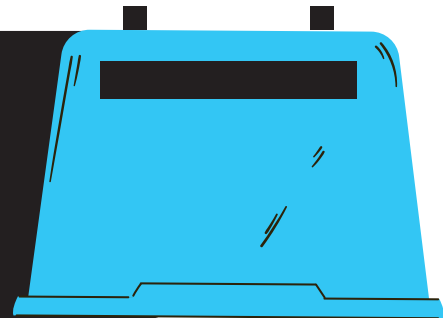
- Tetra pack cartons
- Trays and packaging made from expanded polystyrene (eps)





# PAPER AND CARDBOARD

In 2021, some 1,080 tons of paper and cardboard were collected in Granadilla de Abona. One ton of recycled paper avoids felling 17 trees.



Sheets of paper  
Envelopes and notebooks  
Magazines and old newspapers  
Egg boxes  
Cardboard boxes and packaging  
Cardboard tubes  
Packaging  
Labels  
Junk mail



It is important to flatten the cardboard before putting it into the container.



# GLASS

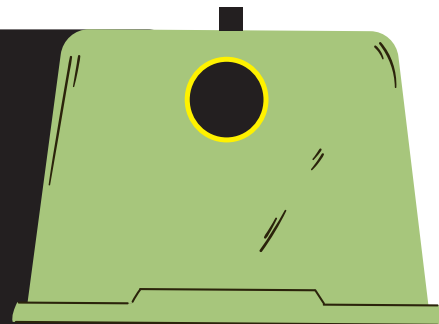


## Glass packaging

Glass bottles  
Preserve and jam jars  
Cosmetic and perfume bottles

Panes of flat glass from windows or picture frames, drinking glasses and cups, ceramic glass hobs and mirrors must be taken to the Punto Limpio (recycling centre). Do not dispose of the stoppers or lids in this container (metal, plastic or cork).

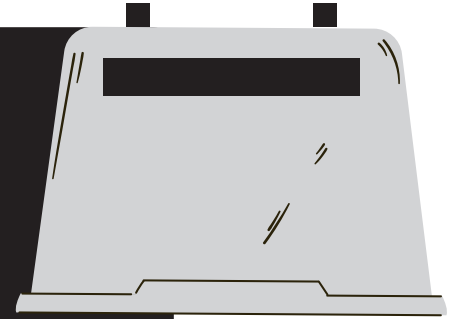
In 2019, Granadilla de Abona collected 763 tons of glass packaging. Glass is 100% infinitely recyclable without losing its properties. However, it is important to differentiate between glass and crystal. Glassware such as bottles and jars are made from glass while crystal is used to make drinking glasses and tableware. Crystal contains minerals that cannot be melted down in the same furnaces used for glassware. The green container is only for the disposal of glass.





# RUBBISH

The rubbish fraction comprises everything that is not included in the other sections of this guide, in other words, it is impossible to recycle. Although it may appear otherwise, this fraction only comprises a mere 20% of all waste. Bags should be put in the rubbish container from 20:00 to 24:00 hours to avoid causing a nuisance from bad smells.



- Sanitary textile waste
- Plastics that are not containers or packaging
- Cigarette ends
- Cat litter or similar
- Animal excrement
- Ceramic and porcelain items
- Household cleaning waste
- Drinking glasses, cups and other crystal items



# PUNTO LIMPIO

## RECYCLING CENTRE

A Punto Limpio or recycling centre is a place that can receive certain types of urban waste, making it possible to:

- ✔ Make good use of those materials that can be recycled, thereby saving raw materials and energy.
- ✔ Avoid the uncontrolled disposal of large or special waste items that cannot be disposed of using the normal waste collection services.
- ✔ Sort and recycle hazardous household waste.

### PUNTO LIMPIO AT ARONA 900 30 50 00

TUESDAYS TO FRIDAYS: 8:00 - 20:00

SATURDAYS: 9:00 - 20:00

SUNDAYS: 9:00 - 14:00

CLOSED ON MONDAY AND HOLYDAYS

[www.tenerife.es/portalcabte/es/temas/residuos](http://www.tenerife.es/portalcabte/es/temas/residuos)

[www.sermugran.es](http://www.sermugran.es) - 922 75 81 16



The waste items indicated in the following table can be disposed of at the Punto Limpio:

#### Ordinary items



Paper and cardboard  
Light packaging, plastics, metals  
Textiles  
Used vegetable oil

#### Especial items



Fluorescent lamps and light bulbs  
Batteries and cells  
Mineral oil  
Paint and solvents  
Photographic material  
Ink cartridges and toner  
Tyres  
CDs and DVDs  
Chemically contaminated containers  
Car Batteries  
Aerosols

#### Bulky items



Household appliances  
Furniture  
Mattresses  
Chargers  
Computers  
Printers  
Small household appliances

#### Other items



Wood and metal  
DIY waste such as rubble  
Garden clippings  
Coffee pods

The Puntos Limpios are suitable places for taking small quantities of waste items that cannot be disposed of in the normal curbside containers. These waste items are subsequently collected by authorised waste managers in order to provide the correct treatment



# USED CLOTHING AND FOOTWEAR



Clothing  
Footwear  
Handbags  
Ties  
Household linen  
Blankets  
Sheets  
Towels

Clothing and footwear placed in tightly closed bags can be put into these containers, to ensure that these items can be subsequently recycled to make new textiles and the re-use of the same.

Granadilla de Abona currently has 30 containers for the collection of used clothing and footwear, find your nearest location at:  
[www.sermugran.es](http://www.sermugran.es)



# HOUSEHOLD ITEMS

This collection service is directed at those household items that cannot be disposed of in the network of containers due to their size or type.

Items of furniture

Armchairs

Sofas

Chairs

Mattresses and bed bases

Washing machines and

Refrigerators

Televisions

Video players



*Calendar:*

Place your household items in an orderly fashion next to a container bank, without obstructing the passage of vehicles or pedestrians, on the days indicated from **19:00** hours onwards.

To improve the service, call **010** to arrange for your collection. There is no service on public holidays.

| SUNDAY  | MONDAY     | TUESDAY  | WEDNESDAY                                    |
|---|------------|--|--|
| ATOGO-CASABLANCA<br>LOS ABRIGOS<br>LA TEJITA-SOTAVENTO<br>EL MÉDANO | SAN ISIDRO | LAS VEGAS-CHIMICHE<br>LOS BLANQUITOS<br>EL DESIERTO<br>EL SALTO VICÁCARO | CRUZ DE TEA<br>GRANADILLA<br>CHARCO DEL PINO |





# WASTE COOKING OIL

Cooking oil  
Frying oil  
Reserve cans oil



The waste oil container, which is generally orange, is intended for the disposal of waste cooking oil. It is forbidden to put industrial oils such as engine oils, lubricants, etc. into this container.

Recycled vegetable oil can be used to make biodiesel, as well as soaps, detergents, candles, among others. The oil must be put in a well-sealed plastic container.



# SUSTAINABLE GRANADILLA

